

Size $\phi 0.02 \sim \phi 0.1$ Refer to page 23 for material applications.

PMD PLT

h4
tolerance3.175
shankShrink-fit
compatible

Features

For pilot drilling
Flute Length L/D 2D
Diameter tolerance 0/-3 μ m
4-facet drill point

Total 11 models

Unit (mm)

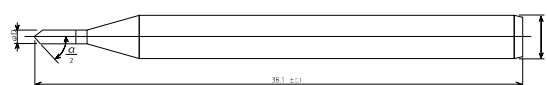
Product code	Model Number	Diameter ϕD	Diameter tolerance	Flute length ℓ	Overall length L	Shank Diameter ϕd	Suggested Retail Price ¥
※1	PMD PLT 0.02 X 0.04	0.020	※1	0.04	38.1	3.175	※1
※1	PMD PLT 0.0225 X 0.045	0.0225		0.045			※1
140-0018	PMD PLT 0.025 X 0.05	0.025	-0.003/-0.006	0.05			28,000
140-0019	PMD PLT 0.03 X 0.06	0.030	-0.005/-0.008	0.06			16,100
140-0020	PMD PLT 0.04 X 0.08	0.040		0.08			14,800
140-0021	PMD PLT 0.05 X 0.10	0.050		0.10			13,500
140-0022	PMD PLT 0.06 X 0.12	0.060		0.12			12,200
140-0023	PMD PLT 0.07 X 0.14	0.070		0.14			10,900
140-0024	PMD PLT 0.08 X 0.16	0.080		0.16			9,600
140-0025	PMD PLT 0.09 X 0.18	0.090		0.18			8,300
140-0026	PMD PLT 0.1 X 0.20	0.100		0.20			7,000

※1 These sizes are special items. Please contact our sales representative for details.

※2 Special sizes can be manufactured upon request. Please contact our sales representative for details.

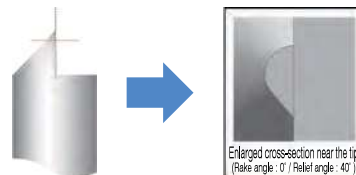
Refer to page 23 for material applications.

PSM

h4
tolerance3.175
shankShrink-fit
compatible

Features

For Chamfering · Counter sink · Center drill
Taper angle 90°

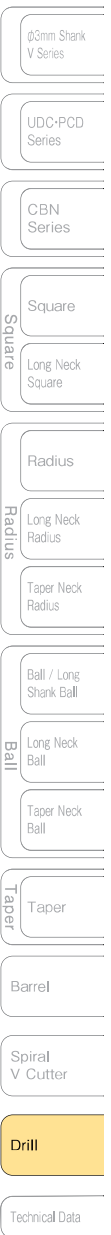


Total 1 model

Unit (mm)

Product code	Model Number	Diameter ϕD	Half Included Angle A	Overall length L	Shank Diameter ϕd	Suggested Retail Price ¥
141-9001	PSM N603A 1.0 90°	1.0	45°	38.1	3.175	6,000

※ Special sizes can be manufactured upon request. Please contact our sales representative for details.



φ0.06 Ultrafine hole processing on super engineering plastic

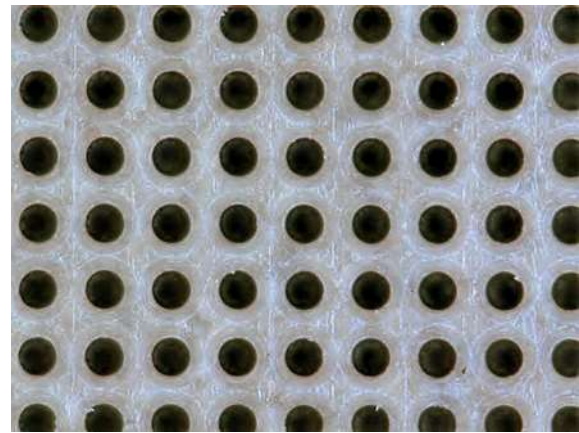
Tool

Center PSM N603A 1.0 × 90° (Center depth 0.003 mm)
 Pilot PMD PLT 0.06 × 0.12 (Pilot depth 0.009 mm)
 Through PMD STD 0.06 × 0.6

Drilling condition

Drilling depth	0.4 mm
Hole wall pitch	0.0415 mm
Spindle speed	20,000 min ⁻¹
Feed rate	10 mm/min
Peck Amount	0.005 mm/time
Hit count	961 hits
Coolant	Oil mist

Work surface

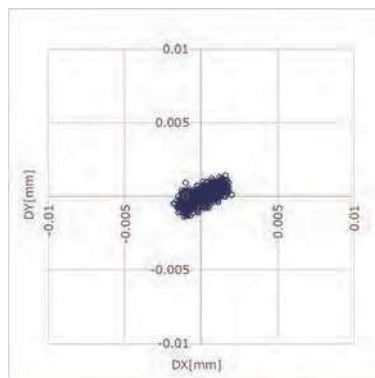


Hole diameter Avg ± 3σ φ0.0578 ± 0.0006

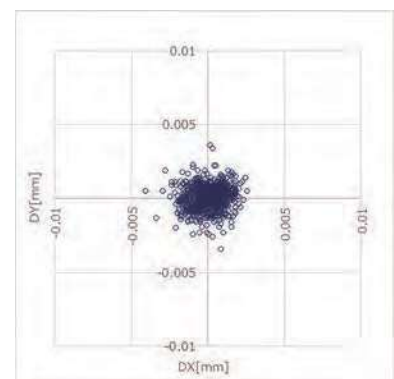
Hole registration accuracy

	Entry side	Exit side
Avg + 3σ (mm)	0.0021	0.0028
Max (mm)	0.0021	0.0041

Entry side



Exit side



- φ3mm Shark V Series
- UDC-PCD Series
- CBN Series
- Square
- Long Neck Square
- Radius
- Long Neck Radius
- Taper Neck Radius
- Ball / Long Shank Ball
- Long Neck Ball
- Taper Neck Ball
- Taper
- Barrel
- Spiral V Cutter
- Drill**
- Technical Data