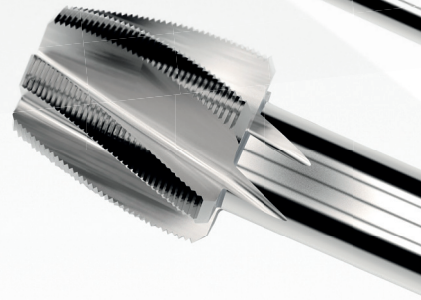
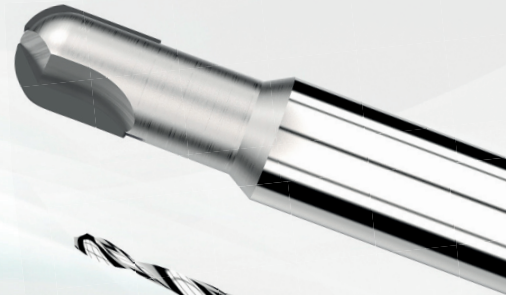
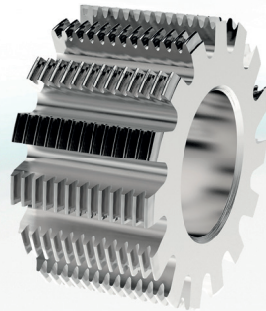
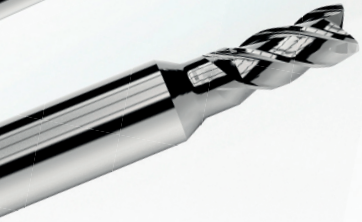
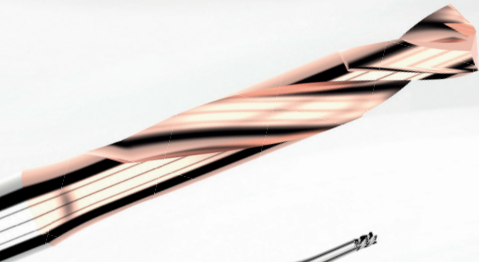
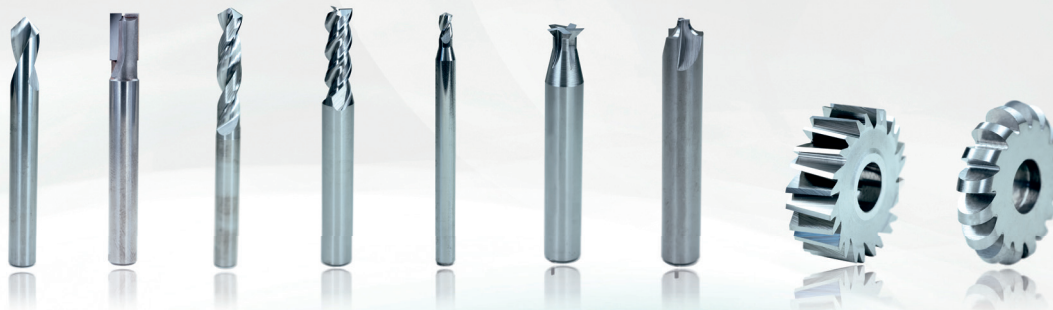


**LB** LOUIS BELET<sup>®</sup>  
Swiss Cutting tools





# STANDARD TOOLS

**in solid carbide, PCD and ceramic**

End mills

Circular saws

Drills

Thread tools

Tools with coolant holes

Expert Tools





# SPECIAL TOOLS

in solid carbide, PCD and ceramic

Hob cutters for gears

Mills for snailing

Punch tools

Digging tools

Tools with coolant holes

Step drills



## e-Shop

### ON-LINE STOCK

View stock levels live and online for all standard products. You can also check the available quantities for the products you have been allocated! The e-shop option allows you to purchase the desired products directly online.

## ToolFinder

### FIND YOUR TOOL

Simplify your life and find the right tool for your application in just a few clicks! Simply enter the material to be machined and the dimensions and you will get our recommended cutting parameters in just a few clicks.

## Re Grinding

### RESHARPEN YOUR TOOLS

A small step towards the circular economy ! We offer a regrinding service for most tools, including those of our competitors.

## Research & Development

### INNOVATION

Innovation is in our DNA. Our R&D team regularly develops new products to keep you one step ahead of your competitors. Whether it is for the development of a machining strategy or for the realization of a specific tool, our teams are ready to meet your challenges.

## Coating

### COATING

The optimization of a tool's performance is linked to its coating. Our coating center is equipped with the latest technology and is managed by specialists in the field.

## Consulting

### ASK FOR ADVICE

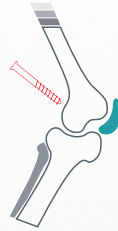
Whether it's recommending cutting parameters, helping you get started or optimizing your machining strategy, our experts are at your side to solve your problems.



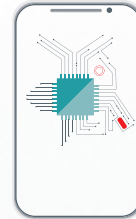
# FIELDS OF APPLICATION



**WATCHMAKING AND JEWELLERY  
PRODUCTION**



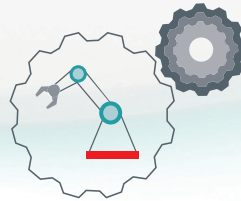
**MEDTECH**



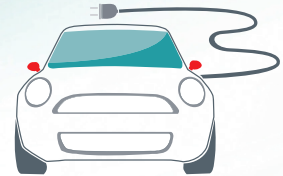
**ELECTRONICS AND CONNECTORS**



**AERONAUTIC**



**MICROMECHANICS AND ROBOTICS**



**ELECTRIC MOBILITY**



# TECHNICAL REPRESENTATIVES

## SINCE 1948

Founded in 1948 in Vendlincourt by Louis Bélet, the family business employs 150 people on two production sites. Today, it is managed by the two grandchildren of the founder.

## FRENCH PART OF SWITZERLAND



**Loïc Yerly**  
+41 (0)79 445 53 07  
lyerly@louisbelet.ch



**Hubert Choulat**  
+41 (0)78 708 54 01  
hchoulat@louisbelet.ch



**Raphaël Dubail**  
+41 (0) 79 511 98 83  
rdubail@louisbelet.ch

## INTERNATIONAL



**Hervé Baour**  
+ 41 (0)78 646 94 18  
hbaour@louisbelet.ch

## THE QUEST OF EXCELLENCE

Bélet's spirit relies on the quest of excellence. In all our activities, we constantly focus on finding the best solutions, for our customers and our employees.

Quality and environmental management are testified by our ISO 9001:2015 and ISO 14001:2015 certifications.

## GERMAN PART OF SWITZERLAND / GERMANY



**Markus Ackermann**  
+41 (0)79 358 42 84  
mackermann@louisbelet.ch



**Sinan Akyol**  
+41 (0)79 859 33 57  
sakyol@louisbelet.ch

## TICINO / ITALY



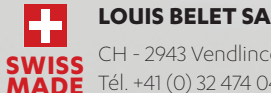
**Luigino Gamba**  
+ 41 (0)79 362 86 09  
lgamba@louisbelet.ch

## FRANCE



**Fabrice Berche**  
+33 (0)6 3017 32 87  
fberche@louisbelet.ch

Authorized distributors list available on [www.louisbelet.ch](http://www.louisbelet.ch)



**LOUIS BELET SA**

CH - 2943 Vendlincourt  
Tél. +41 (0) 32 474 04 10

[www.louisbelet.ch](http://www.louisbelet.ch)  
[info@louisbelet.ch](mailto:info@louisbelet.ch)

